

State of Wyoming Corner Record

(In compliance with the CORNER PERPETUATION AND FILING ACT, Wyoming Statutes, 1977, Section 36~11~101, et seq., and the Rules and Regulations of the Board of Registration for Professional Engineers and Professional Land Surveyors)

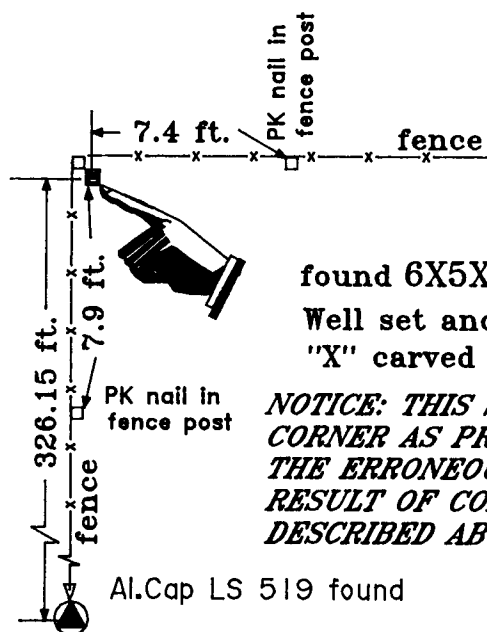
The reverse side of this form may be used if more space is needed.

The Record of the original survey and the citation of the source of the historical information (if the corner is lost or obliterated). The description of the corner monumentation evidence as found and/or the monument and it's accessories as established to perpetuate the location of this corner. A sketch of the relative location of this Monument, accessories, and reference points with the course and distance to adjacent corner (s) (if determined during this Survey). The Method and Rationale used for the reestablishment of lost and obliterated corner.

NOTE: THIS STONE WAS DISCOVERED WHILE PERFORMING A SURVEY IN SEC. 23 T.14N. R.69W.. THE DIMENTIONS FROM THIS STONE TO THE ALUMINUM CAP REBAR ARE SIMILAR AND COINCIDENTALY APPROXIMATE THE DIMENTIONS SHOWN ON THE PLATS OF HAPPY VALLEY 1st FILING AND THE PLAT OF HAPPY JACK RANCHETTES.

Found Granite stone 6"X5"X ? well set in fence corner being N 00°40'22" W a distance of 326.15 feet from a 5/8" rebar with an Aluminum Cap marked LS 519. The origin of said stone is unknown but the measurements from the 1/4 to the Al.Cap as shown on the aforementioned plats create some confusion. This stone and Al. Cap are to be utilized as establishing a property boundary only.

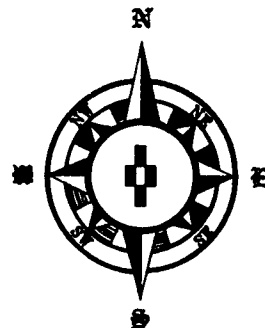
T.14 N. R.69 W.
6th P.M.



found 6X5X? Granite Stone
Well set and Well marked
"X" carved on top

NOTICE: THIS STONE IS NOT A 1/4 CORNER AS PREVIOUSLY ASSUMED. THE ERRONEOUS ASSUMPTION WAS A RESULT OF COINCIDENCES AS DESCRIBED ABOVE.

Laramie County, Wyoming



Date of Field Work: Nov. A.D. 1999 Office Reference: JFRANCIS

Cross Index Diagram

T.14 N. R.69 W. of the 6th P.M.

1	2	3	4	5	6	7	8	9	10	11	12	13	14	15	16	17	18	19	20	21	22	23	24	25	
A																									
B																									
C																									
D																									
E																									
F																									
G																									
H																									
I																									
J																									
K																									
L																									
M																									
N																									
O																									
P																									
Q																									
R																									
S																									
T																									
U																									
V																									
W																									
X																									
Y																									
Z																									

NOT THIS CORNER!!!

Firm/Agency, Address
 Terrestrial Surveying & Mapping Co.
 "Your Friendly Neighborhood Surveyor"
 1127 Terry Ranch Road
 Cheyenne, Wyoming 82007
 Telephone Number: (307) 634~9360

This Corner Record was prepared by me or under my direction and supervision.

SEAL & SIGNATURE



Correction for

Corner Name: 1/4 Section: 29/24 T.14 N. R.69 W. 6th P.M. Cross Index No.